

RFC Editor Report

IETF 98
Chicago

SLA – RFC Editor Time (RET)

(as of 23 March)

	2015			2016				2017
	Q2	Q3	Q4	Q1	Q2	Q3	Q4	Q1 (so far)
Submissions								
Pages	1906	2046	1884	1582	1919	2263	2008	1905
Docs	74	79	88	66	75	79	64	93
PGTE	1738	2377	1636	1577	2124	2202	1892	1743
Publications								
Pages	2217	1886	1613	1937	1953	2089	2118	2205
Docs	86	74	69	91	89	72	58	85
Docs met SLA	80	73	67	15	88	72	57	54
SLA tier	Tier 2*	Tier 2	Tier 2*	Tier 1	Tier 2	Tier 2	Tier 2*	
SLA								

Tier 1
 PGTE < 1950
 67% RFCs pub <= 6 wks RET

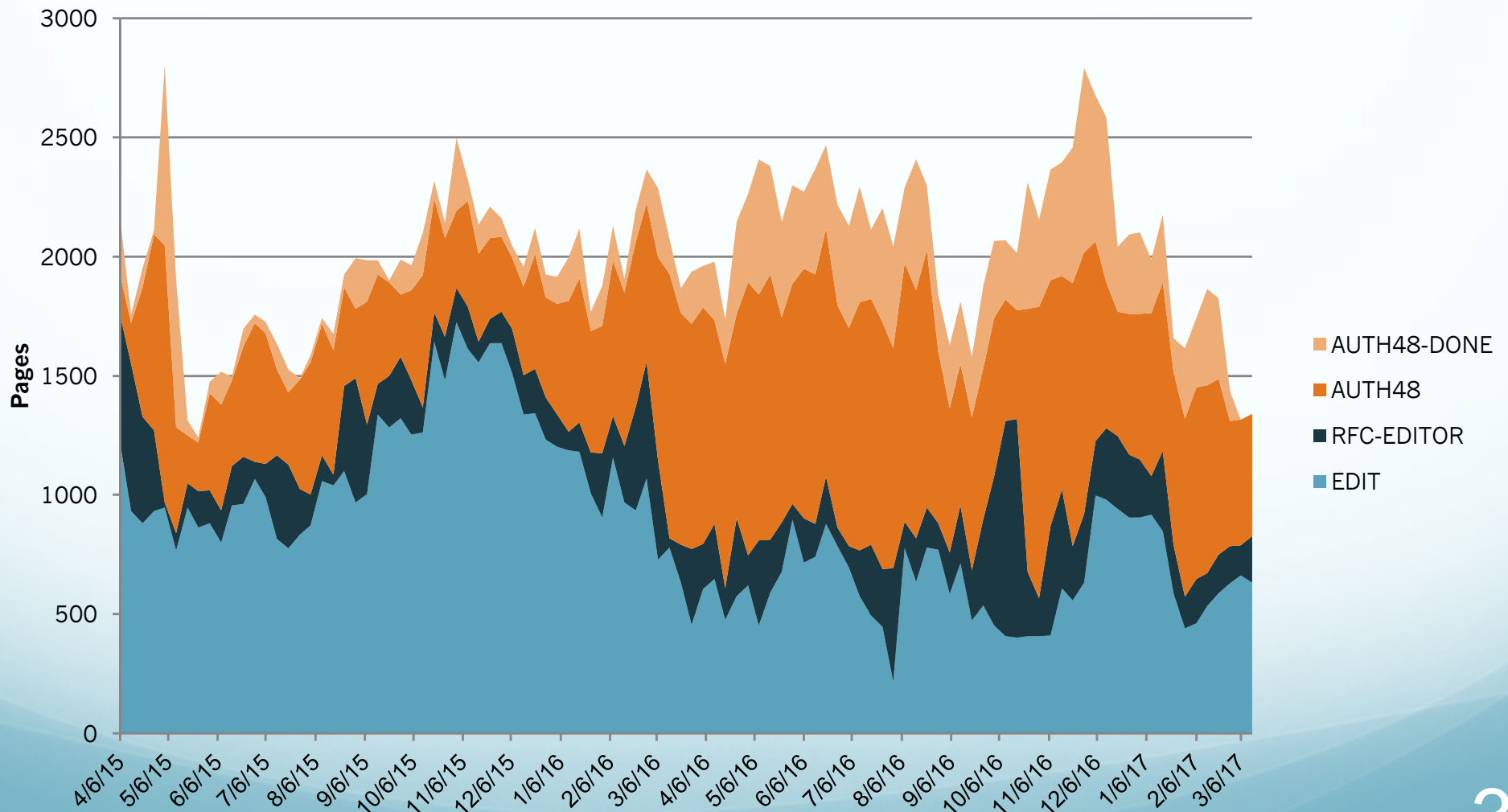
Tier 2
 1950 < PGTE < 3072
 50% RFCs pub <= 12 wks RET

Tier 3
 3072 < PGTE
 possibly renegotiate expected RET

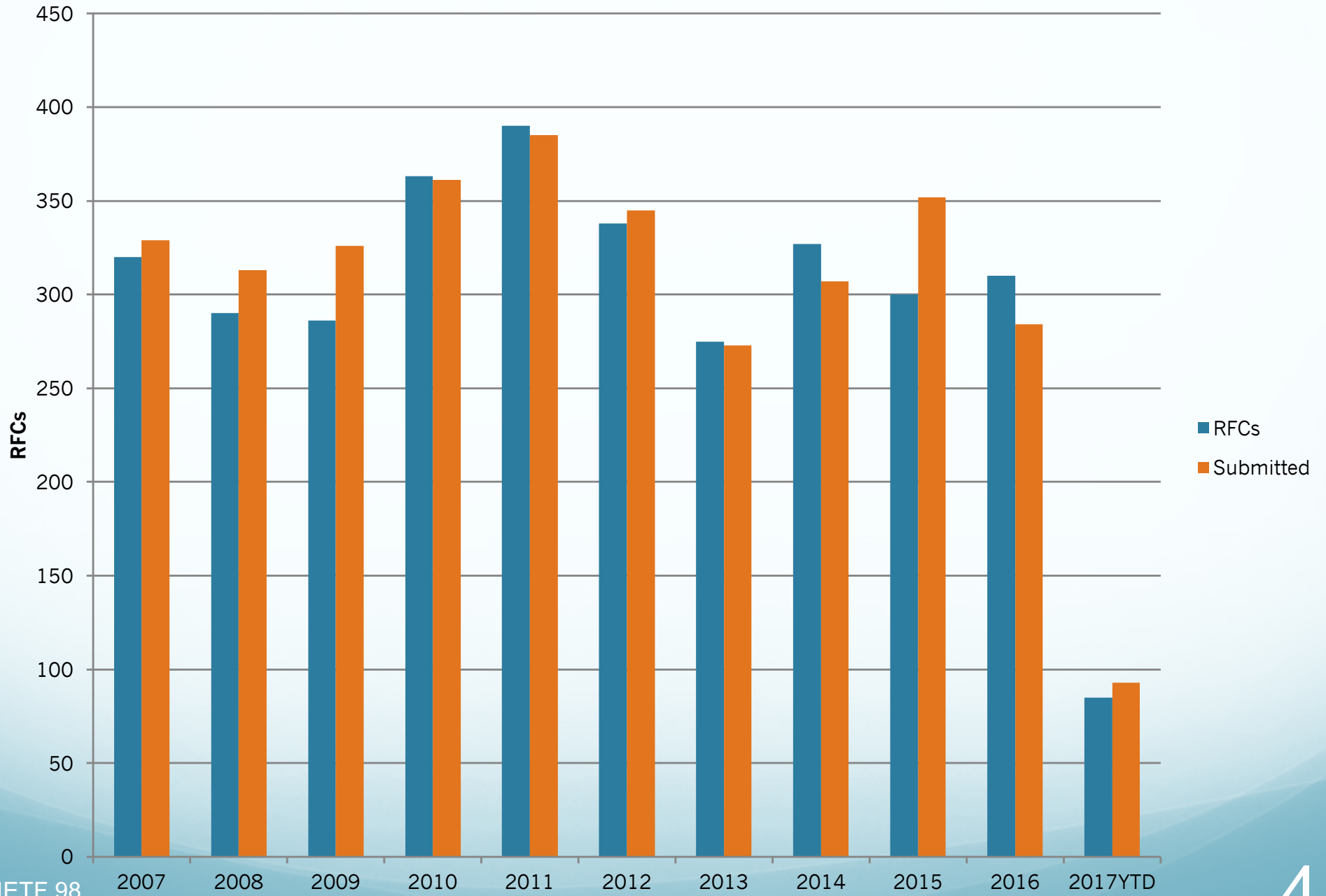
Disclaimer: As we move to new SLA, we are in the process of making the PGTE calculation as accurate as possible. The PGTE has been updated for accuracy.

Primary Processing States

Pages by state from 2015-04-01 to 2017-03-23



RFCs published from 2007 to 2017



Since IETF 97

- Publications: 126 RFCs (3928 pages; Nov - Mar)
 - 37% increase in pg count of RFCs since last reported
 - 29% increase in doc count

Note: IETF 96 – 97 (Jul – Oct)
- Cluster AUTH48 pages updates
Full view of author approvals on one page
- Server upgrades

Current & Ongoing Activities

- Publishing RFCs: keep the docs moving
- Stable URIs for errata
- xml2rfc v3: Continue to follow format developments and be ready to test tools and draft test procedures
- Improving cluster management and transparency